



Mid Cheshire Hospitals
NHS Foundation Trust

Shaping an exciting future
for the people of Cheshire

A new Leighton...

Our vision:

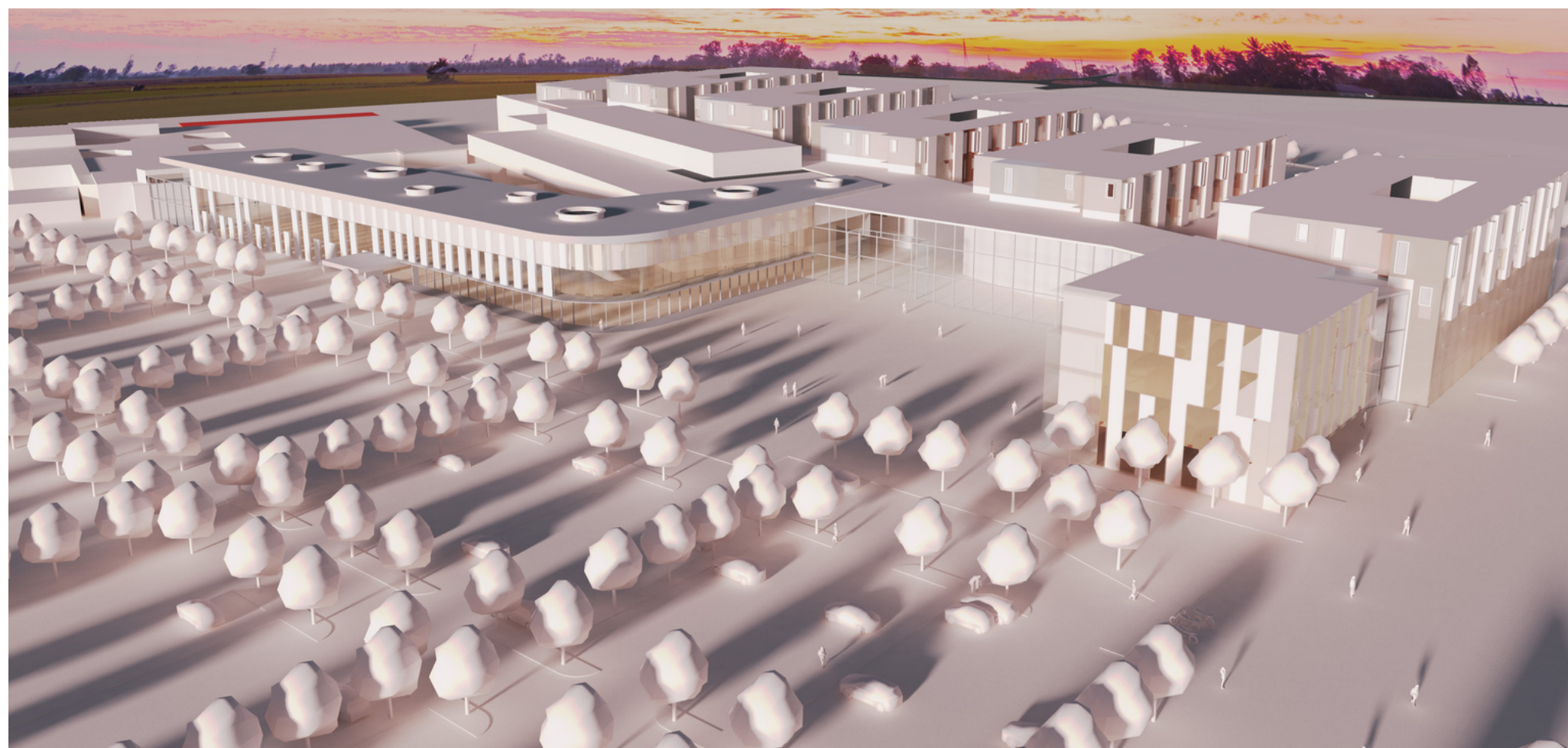
An exemplar, zero carbon hospital that will transform the quality of healthcare for the people of Cheshire and across the north west of England.

Mid Cheshire Hospitals NHS Foundation Trust is developing a long-term vision for the future which includes an ambitious plan for the redevelopment of Leighton Hospital.

It will play a vital role at the heart of the community, placing digital innovation at the forefront of health services designed to tackle inequalities and meet the needs of a growing and ageing population.

At a time of enormous pressure on public finances, a new Leighton offers major economic benefits, sustainable skilled jobs and the cost efficiencies of 'smart' buildings. With value for money paramount, independent analysis shows that the ongoing refurbishment of the present failing infrastructure over the next 15 years, will cost substantially more than the projected new-build costs.

Redeveloping Leighton Hospital gives a unique opportunity to create a facility that can help deliver a new clinical model – a blueprint for providing future healthcare both in and out of hospital.



Scale of the challenge

The existing estate and infrastructure at Leighton is no longer fit for purpose. The hospital was built in the 1970s and the quality of materials used has resulted in significant spend to resolve safety risks, primarily reinforced concrete planks used in the roof and walls (known as RAAC planks).

NHS England and NHS Improvement has set a timeframe of 2035 for the planks to be replaced and we believe this emphasises the importance of our new plans to be taken forward.



Case for change

In April, the Trust Board approved an outline business case to apply for funding for a new hospital. This has been submitted to both NHS England and the Department of Health and Social Care for due consideration in the coming months, as part of the government's hospital rebuilding programme.

Our 4,500 members of staff are immensely proud to provide high quality services to a population of around 300,000 people. Our plans have the overwhelming support of staff, patients and a strong portfolio of public and private partners.

Together, we believe that a new hospital would be transformative for the delivery of modern integrated healthcare and support our ambition to be a Trust with an 'outstanding' rating.

