

Any questions? Make a note here

[illegible]

Eye Care Centre
Leighton Hospital
Middlewich Road
Crewe, Cheshire
CW1 4QJ

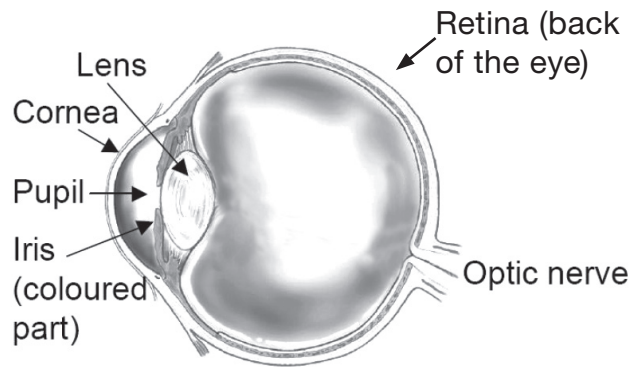


Information for patients

What is Fluorescein Angiography?

This is a test in which the blood vessels in the retina at the back of the eye are photographed as fluorescein dye is injected into a vein in your arm or hand. The results may confirm a diagnosis or a guide to treatment.

Picture of the eye



What do I need to bring with me?

Please bring an up to date list of your medications and any medicines which you may require during your visit e.g. inhalers. After the test your pupils will be large and any sunshine may seem very bright, so you may wish to bring sunglasses.

You will not be allowed to drive yourself home, so please arrange for someone to drive you home. Allow up to three hours for the test.

What happens on the day of the test?

Before you arrive at the Eye Care Centre, please take meals and drinks as usual and ensure that you have taken all your usual medication.

Please inform us if you have any allergies, serious illnesses or if you are pregnant.

The nurse at the clinic will explain the procedure to you and ask you to sign a consent form. It is important you understand the procedure and ask any questions.

Drops will be put into both eyes to enlarge your pupils. Flash photographs will be taken of the back of your eyes. An injection of the dye will be given into a vein in your arm or hand and more photographs taken as the dye highlights the blood supply at the back of your eyes. You will be informed of your results at your next clinic appointment.

Are there any side effects?

- When the dye is given, some patients experience a “hot flush” sensation or nausea that passes quickly. (Some people occasionally vomit).
- The flash from the camera may dazzle your vision for a short time.
- The dye may give your skin a yellow tinge and your urine will be bright yellow for one to two days.
- The eye drops that are used to enlarge your pupils may blur your vision (mainly for close objects) for three to four hours.
- Although it is rare, some people can have an allergic reaction to the injection. The team is fully equipped and trained to deal with this and any other situation should it arise.