

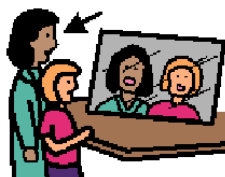
# Children's Speech and Language Therapy Service

## Your first appointment



### Contact details:

**Crewe, Nantwich and Vale Royal:  
01270 275458 / 275485**



## **What we do**

Speech, language and communication needs might include problems with making speech sounds, understanding and using language, stammering, voice (persistent hoarseness), social interaction skills, feeding and swallowing difficulties.

The main focus of our work is to help children and young people develop the best possible communication skills, in light of their difficulties. For many, this is likely to be spoken language but for some this may be learning to use other means of communication, such as communication aids and signs/ signals/ gestures.

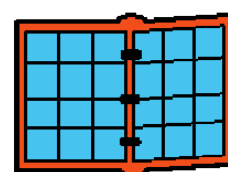
## **Your first appointment**

By now, you will have arranged your child's first appointment. Please note that it is our departmental policy that if you do not attend an appointment without prior notice, you will be discharged from the service.

If you need to cancel or rearrange your appointment, please contact Therapy Admin Services:

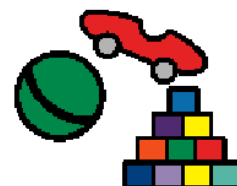
Tel: 01270 278310

E-mail: [tmc-tr.ccicptherapyservices@nhs.net](mailto:tmc-tr.ccicptherapyservices@nhs.net)



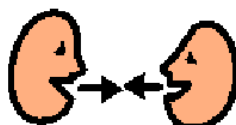
At the first appointment, the Speech and Language Therapist will discuss with you:

- The reason your child has been referred
- Any concerns you may have about your child's speech, language, and communication skills
- Your child's health and general development (it is useful to bring your child's red book along with you).



The therapist may use a combination of toys and /or pictures to gain more information about your child's communication skills.

At the end of the session, based on the information you have provided and assessment results, the therapist will give you advice and discuss next steps with you.



## What will happen next?

Some children may need further assessment before the therapist can decide the best way to help them. This will be arranged if deemed suitable.

Following completion of assessment you will receive a report summarising your child's communication strengths and needs.

The therapist will work collaboratively with parents/carers and other professionals which the child has contact with throughout their episode of care.

## If treatment is indicated, this may involve

- Activity programmes with ideas/games for developing your child's communication skills at home and in educational settings
- Group sessions with a small number of other children and their parents to work on specific skills
- Individual sessions, where the therapist will work with you and your child.



## Student Speech and Language Therapists

We are committed to the development of Speech and Language Therapists in training and work closely with Higher Education Institutions. Your child may be seen by a student therapist. If you would prefer your child not to be seen by a student, please contact us.

This information is available in audio, Braille, large print and other languages. To request a copy, please telephone 01270 275458 / 275485.

Reprinted December 2019 Review December 2021 Ref: CCICP/PSALT/0011219